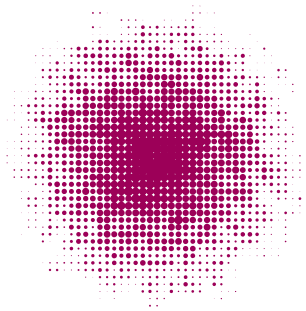




GYP-FLO
LIQUID SUSPENSION



TECHNICAL GRADE LIQUID GYPSUM

ACTIVE CONSTITUENT:

Calcium: 35% w/v

Sulphur: 25% w/v



**ULTIMATE
INDUSTRIAL**

www.ultimateindustrial.com.au



PRODUCT DESCRIPTION:

GYP-FLO is a concentrated liquid suspension of technical grade Calcium and Sulphur applied to improve your soil structure by reducing sodium build-up and increasing Calcium levels in the soil. **GYP-FLO** is much easier to handle and apply via spray, and aerial applications, compared to the spreading of bulk gypsum.

In addition **GYP-FLO** is also a great source of Calcium and Sulphur for soil conditioning. **GYP-FLO** has a particle size of only 5 micron and is more than 80% available resulting in much quicker results in overcoming soil compaction, unlike bulk gypsum that has a particle size of 1000 micron (1 mm) average with a solubility rate of only 0.24%.

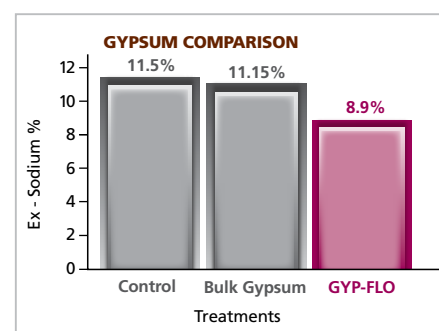
After 4 years of field trials, studies confirmed that the finer particles remain more active in the soil than the courser particles of "bulk gypsum".

APPLICATION RATES:

GYP-FLO is suitable for application to all soils where compaction, high sodium, salt build-up and low Calcium remain a problem. Application rates may vary widely depending on your soil type and other factors. As a result of over 10 years of **GYP-FLO** applications Australia wide, we recommend the following rates as a general guide.

GYP-FLO should be applied with a minimum water dilution of 1 part product to 5 parts water. For spray applications we recommend a minimum nozzle size of 06-08 or a flood jet nozzle to assist with higher water delivery rates, keep agitated after dilution to minimise settlement. If mixing with Chemicals a compatibility test should be conducted first.

SODIUM (%)	SAND-LOAM L/ha	CLAY L/ha
5.0-7.5	25-50	50-75
7.5-10.0	50-75	75-100
10.0-15.0	75-100	100-125
15.0+	100-125	125-150



PACK SIZES AVAILABLE (LITRES): 20, 200, 800 Litres



**ULTIMATE
INDUSTRIAL**

Ultimate Products (Aust) Pty Ltd A.B.N. 57 085 640 080
13 Olive Grove, Keysborough VIC 3173 **P:** 03 9798 3544 **F:** 03 9798 3655
E: admin@ultimateindustrial.com.au **www.ultimateindustrial.com.au**